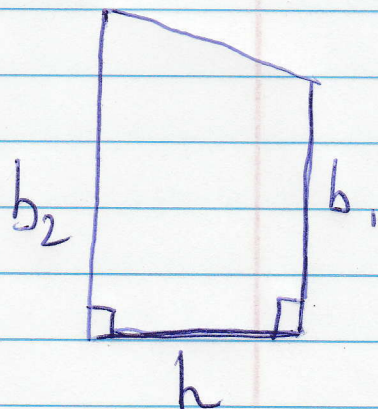
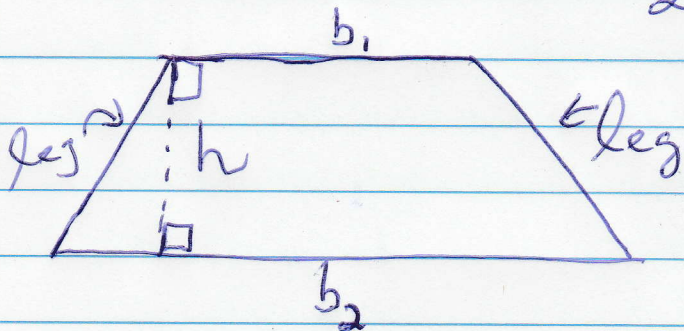


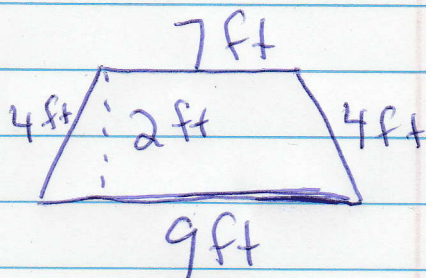
# Notes on Finding Area of a Trapezoid

$$\text{Formula: } A = \frac{1}{2} \cdot h \cdot (b_1 + b_2)$$



The height always forms a right angle ( $\perp$ ) with both bases.

Example:



$$\begin{aligned} A &= \frac{1}{2}h(b_1 + b_2) \\ &= \frac{1}{2} \cdot 2 \cdot (7 + 9) \\ &= \frac{1}{2} \cdot 2 \cdot 16 \\ &= \frac{1}{2} \cdot 32 \end{aligned}$$

$$\begin{aligned} b_1 &= 7 \text{ ft} \\ b_2 &= 9 \text{ ft} \\ h &= 2 \text{ ft} \end{aligned}$$

$$A = 16 \text{ ft}^2$$